

# Pearl Ex

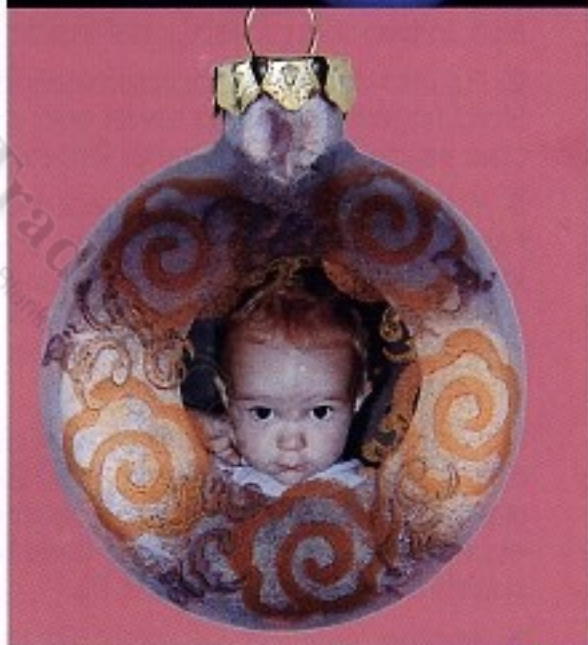
## Powdered Pigments & Stamp Pads



Create your own wonderful holiday keepsakes with Pearl Ex Stamp Pads and Pearl Ex Pigments! The ever popular Pearl Ex Ornaments are now even more fantastic with the addition of Pearl Ex Stamp Pads. Both products are acid-free and archival and great to use on many surfaces such as glass, clay, leather, shrink plastic, and fabric. The drying time depends upon the surface on which it is used and heat setting may be necessary for some surfaces. The Pearl Ex Stamp Pad ink is water-soluble so that it cleans up easily with water. Adults and kids alike love doing these easy-to-do ornaments!

### PROJECT IDEAS

### CHRISTMAS ORNAMENTS



Jacoward



For unlimited stamp pad life, use Jacquard's Pearl Ex Stamp Pad Re-Inker fluid to recolor your pads. To rejuvenate your pad mist lightly with water.



## Pearl Ex Ornament Directions with Stamp Pads

### Supplies:

Clear or frosted Glass Ornaments  
Jacquard Pearl Ex Powders  
Jacquard Pearl Ex Stamp Pads  
Foam or rubber stamps  
Jacquard Textile Paints or Lumiere Metallics (optional)  
Spray adhesive or craft glue that dries clear

### Directions:

1. Mix one part water with two parts glue and pour mixture into ball. Cover opening with finger or paper towel and turn to coat inside completely. Pour out excess. Let dry until mixture is no longer runny. Or place nozzle of spray adhesive close to opening of ornament and, in two short sprays, coat inside.
2. Put into ornament approximately one half teaspoon of Pearl Ex. Hold fingertip or paper towel over opening. Turn and tap ball to coat inside. Pour out excess. Repeat with other colors as you like.
3. You can make this finish opaque by pouring in Jacquard Textile Paints or Lumiere Metallics. Cover opening and turn ball to coat inside. Pour out excess, set with hair dryer or air dry turning occasionally to prevent puddles. **CAUTION:** When setting glue mixture or paints with hair dryer be very careful not to overheat the ornament causing it to break.
4. After the inside of the ornament has dried, stamp onto the outside of the ornament with Pearl Ex Stamp Pads. The soft foam stamps available at craft stores work well on glass. This works especially nice on the frosted ornaments. Use a hair dryer to speed the drying time of the ink.
5. Another variation you might like to try is to glue part of a favorite photo to the outside of the ornament and then stamp around it. **TIP:** This works well on the round flattened shaped ornaments. You also might want to copy the photo onto a thinner piece of paper to make it stick to the ornament more easily.



7 43772 65980 8

Jacquard Products are manufactured in the USA by  
Rupert, Gibbon & Spider, Inc., Healdsburg, California 95448  
For more detailed how to projects and information on our products,  
see our website at [www.jacquardproducts.com](http://www.jacquardproducts.com).

Artist credit: Susan Stover.

### Pearl Ex Stamp Pads: 12 Colors, 4 Series

JSP2100  
Two-Tone  
Gold/Red

JSP2101  
Two-Tone  
Gold/Blue

JSP2102  
Two-Tone  
Gold/Violet

JSP2200  
Metallic  
Gold

JSP2201  
Metallic  
Silver

JSP2202  
Metallic  
Copper

JSP2300  
Interference  
Red

JSP2301  
Interference  
Blue

JSP2302  
Interference  
Violet

JSP2400  
Essential  
Sepia

JSP2401  
Essential  
Black

JSP2402  
Essential  
Indigo

JAC  
6598